

<b>DOCUMENT</b>	<b>RCS5 Software Load</b>
<b>MACHINE/ GROUP</b>	<b>RCS5 Simba</b>
<b>DOCUMENT AUTHOR</b>	<b>Gavin Cunningham</b>
<b>DOCUMENT No.</b>	<b>MTU10208</b>
<b>DATE</b>	<b>01.09.2025</b>



### Background

**When an RCS module or screen are replaced, the following software load process should be followed. It is not recommended to retrieve parameters or load software for fault finding or maintenance issues.**

If the system fails to load to, or communicate with new hardware, test the network voltage, line resistance(60-70ohms) and power supply to the new module.

Contact your machine supplier if the system continues to fault.

**E70S NOTE – LOAD FAULTS ARE CURRENTLY OCCURING DUE TO THE LINK BETWEEN RCS AND CCS CAUSING A CONFLICT WHEN IN SERVICE MODE. TO LOAD RCS SOFTWARE THE ETHERNET TO THE CCS MUST BE DISCONNECTED.**

**Rcs5 Software load -  
Required due to  
hardware replacement**

**1. Ensure the Power, CAN,  
Address plug and Ethernet  
cables are connected to  
the new module**

**2. Insert your access key and enter the  
access code in the USER screen.**

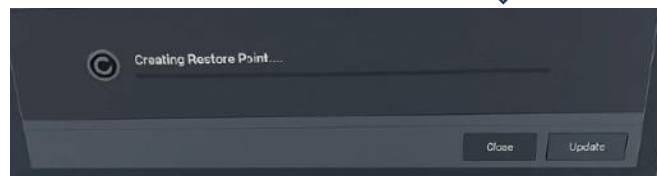
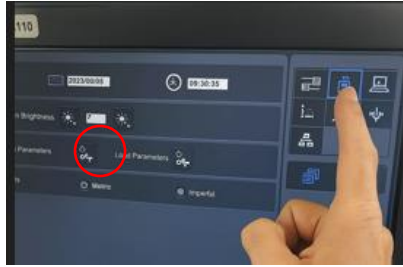
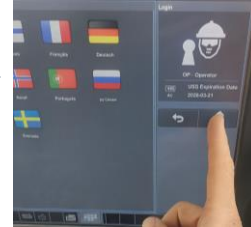
**3. Enter the SYSTEM screen and SAVE  
the parameters to a parameter USB.**

**4. Turn the system off  
Insert the software USB and turn the  
system on.  
The system will enter service mode  
Option - tick the top right box to force  
load to all (optional)**

**5. New modules or modules  
requiring update will be shown in  
the top box  
Existing modules shown here.**

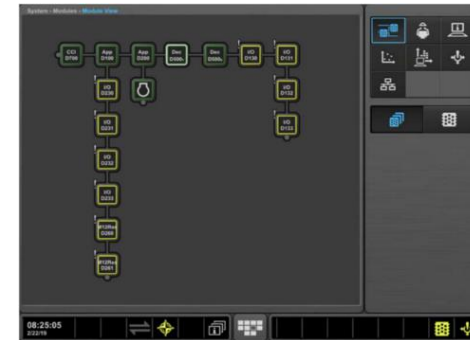
**6. Select at the bottom right  
Restore OR Update**

**7. The system will list all previous  
software saved to the Application  
module and its date.  
select the latest to restore from.**



**10. Enter the SYSTEM screen and  
LOAD the parameters from the  
parameter USB.  
CAUTION - DO NOT SAVE**

**12. Failure to load, press F1 on start up.  
Check that new and existing modules  
recognized  
Disp2 and Enc3/4 will be dead - these are  
remote screen**



**11. Enter the SYSTEMS - MODULES  
screen to check the status of all  
modules.**

**Green - OK  
Yellow - Fault, may be a minor input,  
output or voltage fault not linked to  
communication  
Red - OFFLINE Coms or power supply**

