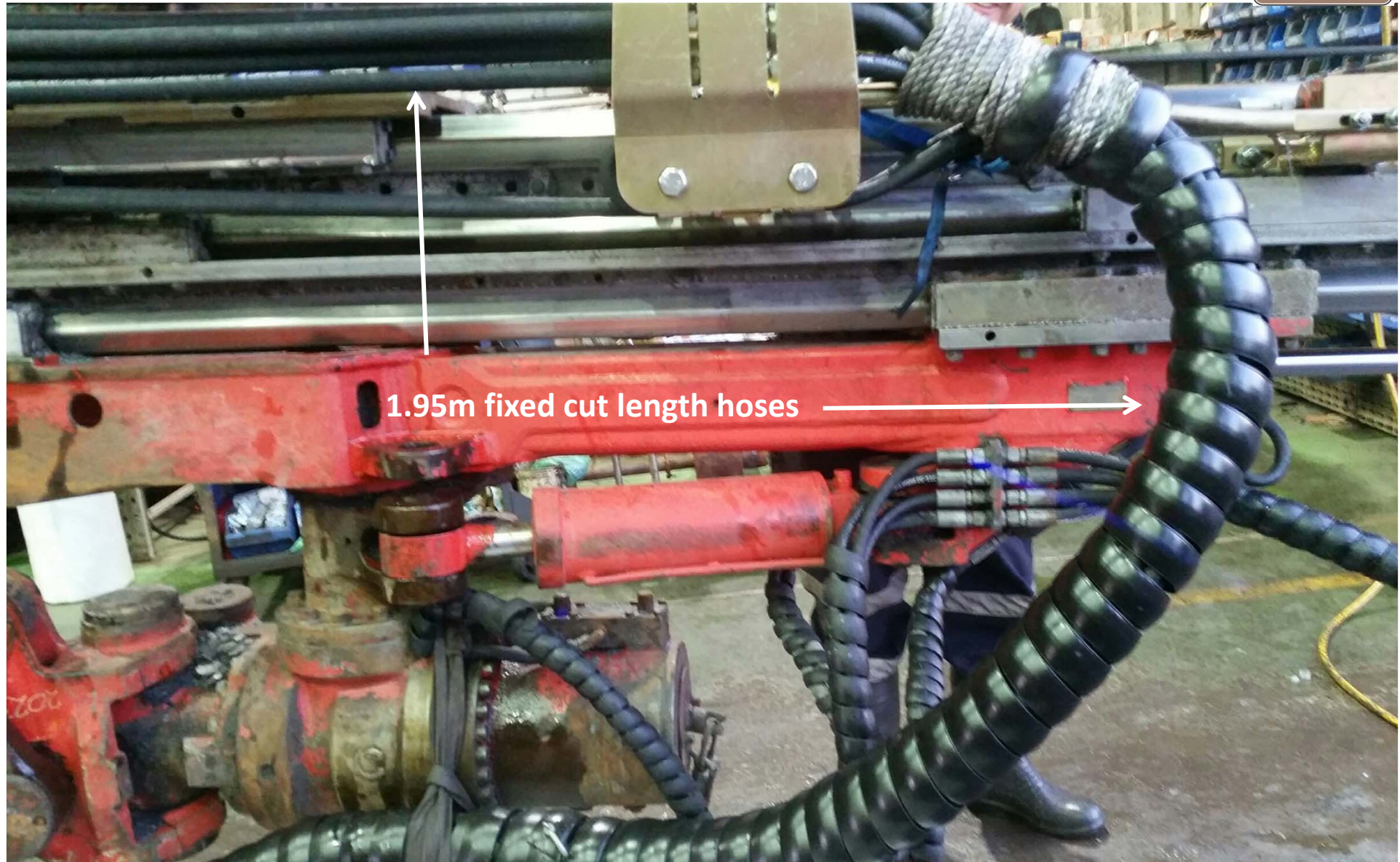


MT jumbo hose tree and hosing strategy HLX and 525



- Bulkhead Jic in place of clamps reduces hose fatigue and increase laminar flow of impact circuit oil.
- Hoses roped to mount bar prevent chafing or hose damage around the feed rail
- Loom hanging prevents damage around the roll over while drilling lifters and positioning for bolting

MT jumbo hose tree and hosing strategy HLX and 525



- Tie one end of the rope temporary to the auto return (approx. 13mtrs)
- Use a strap to hold the loom in place near the auto return
- Loop the rope around the top bulkhead cover bolt then bring the rope back to the auto return end
- Half hitch around the loom then tightly rope around the loom toward the bulkhead, about 30 rounds.
- Remove the loop off the bulkhead bolt, put the hose tree end of the rope through the loop created by the bolt.
- Pull the rope end at the auto return to drag the free end into and under the rope wind.
- Use the feed or a scaling bar to pull the loop to the middle of the rope wind. Cut off excess rope.



Note - We are unsure of the originator of this roping method (let me know and I will add credit to our docs) but it is simple and completely eliminates hose damage or stress at the bulkhead and hose support.

Gavin Cunningham

MT jumbo hose tree and hosing strategy HLX and 525



Fig 1



Fig 2

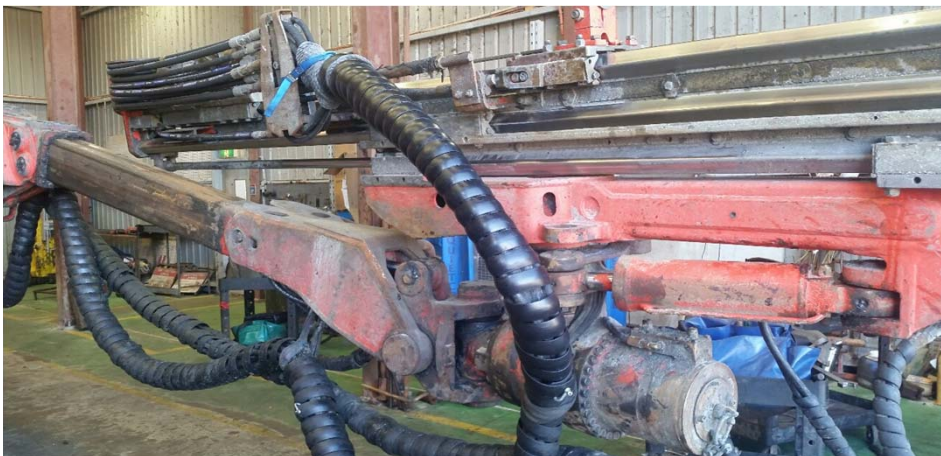


Fig 3

- Install a flushing head bolt into the feed post, opposite side of the hose tree. As per Figure 1
- With the split feed all the way forward, and feed extension fully forward, hang the loom with a 1m sling from the M24 bolt head. As per figure 2.
- The simplest way to hang or remove the loom is to roll the feed to 90deg, with the hose tree close to the ground, the loom will sit on the ground and the sling will be slack, allowing hanging or removal without lifting.
- Check that the sling and loom are almost tight when the feed and feed extension are fully retracted.
- Too slack and the loom will catch around the roll over, to tight and it will stress the hoses at the hose support.

Thanks to David Rainey and Ben Doughty for design and field testing assistance.

Gavin Cunningham