

[JUNE 2021]

MT3128 0034 013 CLIP ON CLAMP

It has been identified that movement of clip-ons during drilling can cause premature wear on Feed rails. To alleviate this MT has developed a simple clipon clamp to be fitted to prevent this movement. Clamp is fitted using an existing rear M16 threaded hole in the feed rail and turning the offset cam bolt until the clamp holds the clipon firmly in place. Then the M16 bolt can be tightened to 240nm to hold in place.

The drifter cradle will clear the clamp in all positions

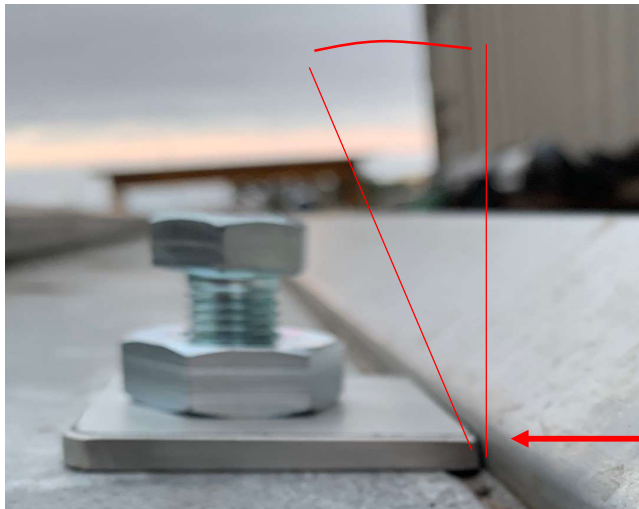
CLIPON CLAMP



M16 CLAMP BOLT

OFFSET CAM BOLT

5 degree angle



Clipon clamp has a 5 degree angle to match the clipon and feedrail and must be fitted as shown