

MTSWI No.	MTSWI210212	Date -	12/02/2021	Version – 1.1
Task	MT S7C Breakout Box Fitment			Timeframe – 6 hrs.



- Materials Required
1. .System reference
  2. .Take-5 or equivalent
  3. .
  4. .
  5. .
  6. .
  7. .

- Equipment and tools
1. .Machine
  2. .PPE as required
  3. .Electrical grease
  4. .Socket set
  5. .Denso tape
  6. .Hose straps/cable ties
  7. .

# SAFETY MUST BE YOUR FIRST PRIORITY

## SAFE WORK INSTRUCTIONS

### MT S7C Breakout Box Fitment

	Carefully read through relevant machinery information before use		Enclosed steel capped footwear must be worn at all times
	Safety eyewear must be worn at all times		Gloves must be worn if working with high pressure oils, not with rotary equipment
	Hearing protection must be worn		








**WARNING**  
**HIGH PRESSURE OIL** can cause severe injury.  
 Disconnect power and drain accumulator before servicing hydraulic system.






MTSWI No.	MTSWI210212	Date.	12/02/2021	Version - 1.1
-----------	-------------	-------	------------	---------------

Task	MT S7C Breakout Box Fitment
------	-----------------------------

**Background** – The MT breakout boxes have been developed as a water-resistant alternative to the soldered cable fitted to the S7C’s, for the gripper arm proxy sensors, linear sensor and carousel sensor. It has proved effective in preventing failure, if fitted correctly. The following outlines the most effective way of fitting the breakout boxes, in order to prevent failure.

- The boxes should be mounted on top of one another as shown in fig. 1, using the stainless cover. **DO NOT OVERTENSION MOUNTING BOLTS**, this will crush the boxes and allow water to enter.
- Electrical grease *and* Denso tape should be used on all plugs, this will prevent water ingress and failure due to corrosion.
- The clamp **MUST** be used for the armoured cables, where the cables come into the clamp from the boxes, create a loop that goes around the clamp before it goes through it. This can be seen in fig. 1, this prevents failure from the cables pulling the plug out of the box when the loom is caught on mesh, for example, as the armoured cable will tighten around the clamp rather than pulling on the plug.
- Using the slots in the cover, strap/cable tie excess cabling to the back of the cover as shown in fig. 2. this prevents cables from being damaged by rocks etc, when cable tied to hosing.
- Using suitable spiral guard, wrap cables separately to hoses.

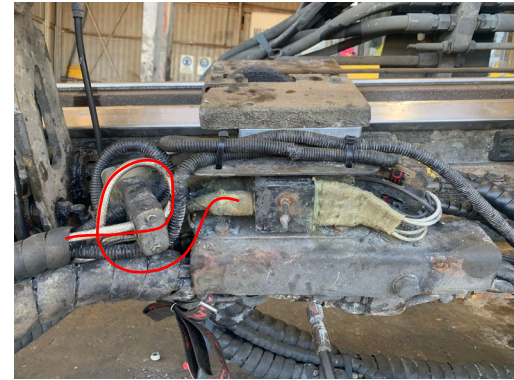


Fig. 1.

The cable comes out of the box, beneath the clamp, around over the top, and then through the clamp.



Fig. 2.

