

MTSOP No.

MTSOP0047TFX

Date -

20/11/2018

Version - 1.7

Task

Testing TFX Cylinder and TFX valving for bypass or failure

Author – G Cunningham / P Reynolds

Materials Required

1. 18MM offset SPANNER
2. 19MM offset SPANNER
3. OIL DRIP TRAY
4. 3 x 9/16 JIC plugs and caps (mark A, B and C)

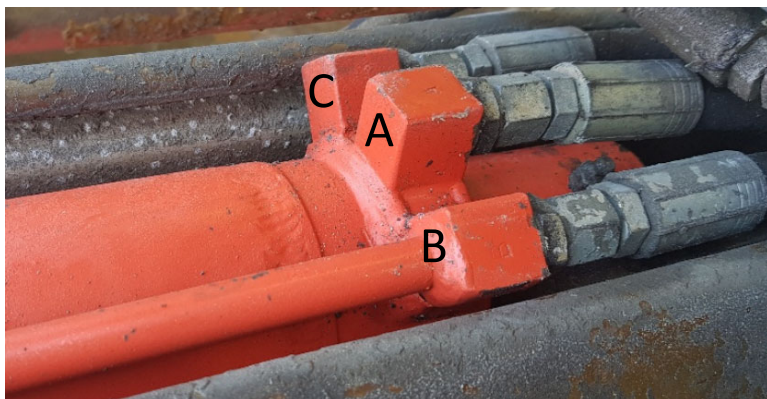
Equipment and tools

1. PPE as per S.O.P/Site Specific
2. Tags/Locks
3. Risk Assessment booklet
4. Hazard Reporting booklet
5. JHA Booklet

# SAFETY MUST BE YOUR PRIORITY

## SAFE WORK INSTRUCTIONS

### MT Bypass test - TFX



	Carefully read through relevant machinery information before use		Enclosed steel capped footwear must be worn at all times
	Safety eyewear must be worn at all times		Gloves must be worn if working with high pressure oils, not with rotary equipment
	Hearing protection must be worn		

**Background** - The TFX cylinder utilises a standard rod with piston, as well as a floating piston to create a second length limit for bolting.

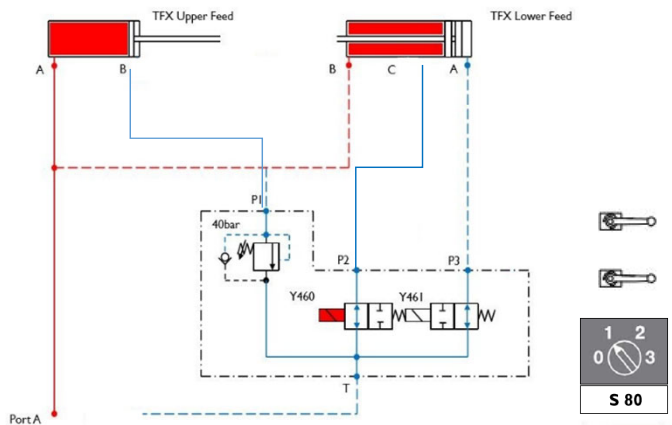
When either the main piston or the floating piston seals fail, the bolting length limit will creep.

The system uses Taps or hydro electric valves to control supply to the floating piston and barrel port. If the tap or valve controlling the floating piston leaks, cylinder creep will occur.

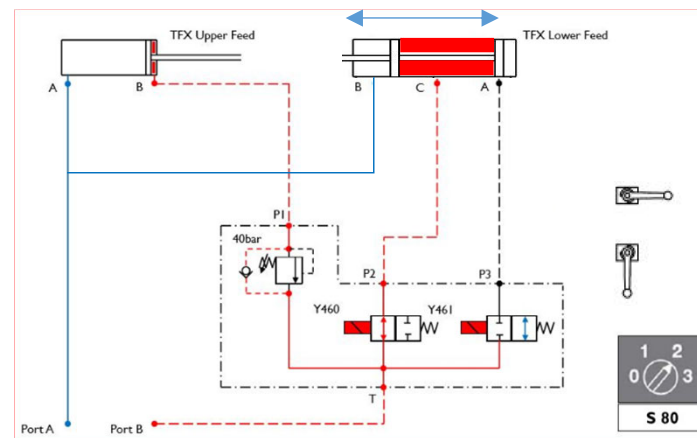


**WARNING**  
HIGH PRESSURE OIL can cause severe injury. Disconnect power and drain accumulator before servicing hydraulic system.

**STEP 1:** Select switch pos. 1 (Both Taps open) -, Move both feeds forward to their stop.



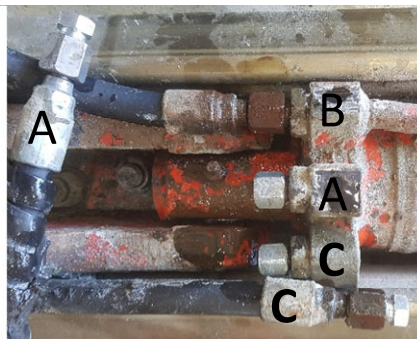
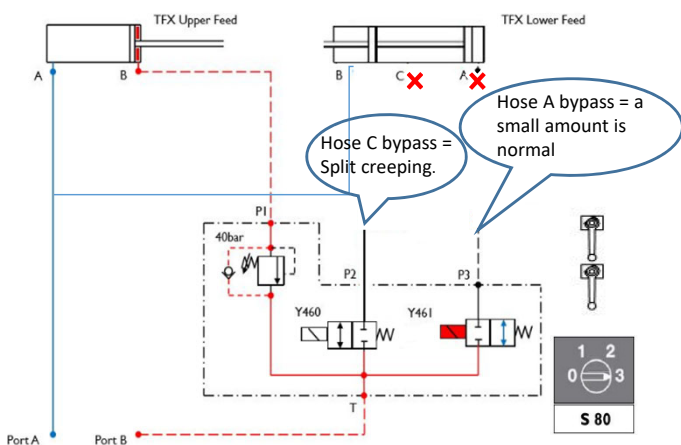
**STEP 2:** Select switch position 2 (valve open and closed)– move the feed Backward for 30 seconds to ensure traveling piston moves to the rod end of the cylinder.



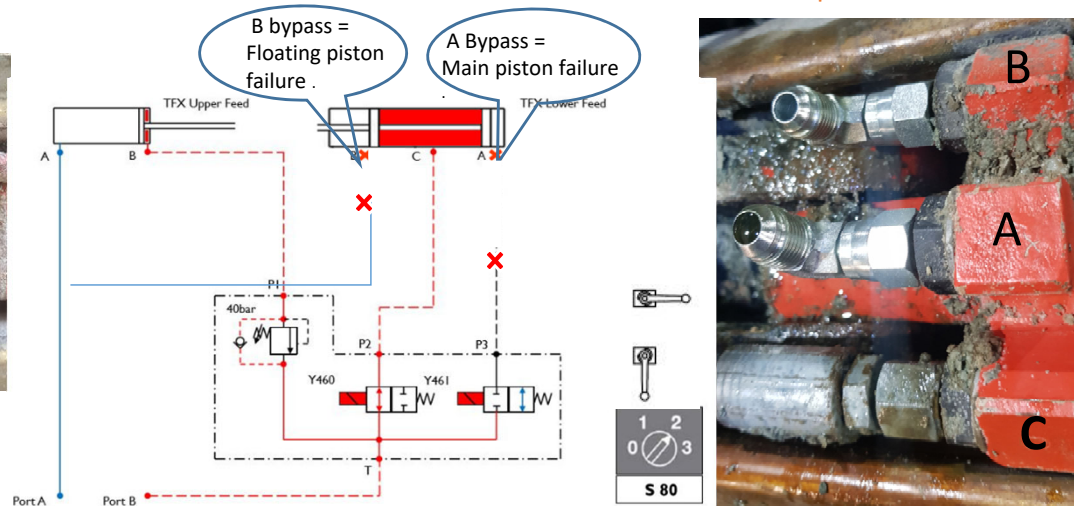
**STEP 3:** Select switch Pos. 3 – (Close both Valves), Remove hose C and A, Fit the marked plugs but leave them loose. Cap the cylinder ports .

Apply reverse fast feed for 3 minutes

Check C for any flow from the loose plug to indicate Valves (or Taps) are bypassing



**STEP 4:** Select Pos 2 - Refit hose to C port, (valve open and closed) Remove and plug both A and B hose, Leave the cylinder A and B open Reverse fast feed for 3 minutes and check for oil flow from either port.



Note. This S.O.P is to be used alongside all site safety standards. Site specific PPE must be used and all risk assessments and Isolation procedures must be followed at all times.